



Welcome to the Symposium!

**Linking health, equity and sustainability
in schools**

**Lier santé, équité et développement durable
dans les écoles**

**Gesundheit, Gerechtigkeit und nachhaltige
Entwicklung in der Schule verbinden**



© by Stefan Arendt

Melbourne 2004 - Vancouver 2007

Genève 2010

Organization and sponsoring



**EDUCAZIUN E SVILUP
EDUCAZIONE E SVILUPPO
ÉDUCATION ET DÉVELOPPEMENT
BILDUNG UND ENTWICKLUNG**



BertelsmannStiftung
Menschen bewegen. Zukunft gestalten.



Schweizerische Eidgenossenschaft
Confédération suisse
Confederazione Svizzera
Confederaziun svizra

Département fédéral de l'intérieur DFI
Office fédéral de la santé publique OFSP

Avec le soutien de la



Gesundheitsförderung Schweiz
Promotion Santé Suisse
Promozione Salute Svizzera
Health Promotion Switzerland



Conceptual background

European Network of Health Promoting Schools →
Schools for Health in Europe, SHE network

www.schoolsforhealth.eu

43 member states – since 1992

Responsible Organizations: WHO, Council of Europe, EU





Swiss Network of Health Promoting Schools

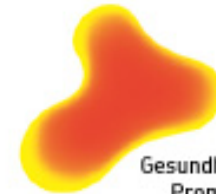
Situation in July 2010 :

- More than 900 schools (KG – Sek.II)
- Nearly 200'000 students
- More than 22'000 teachers
- 14 cantonal or urban networks

www.gesunde-schulen.ch

www.ecoles-en-sante.ch

www.radix.ch



Gesundheitsförderung Schweiz
Promotion Santé Suisse
Promozione Salute Svizzera

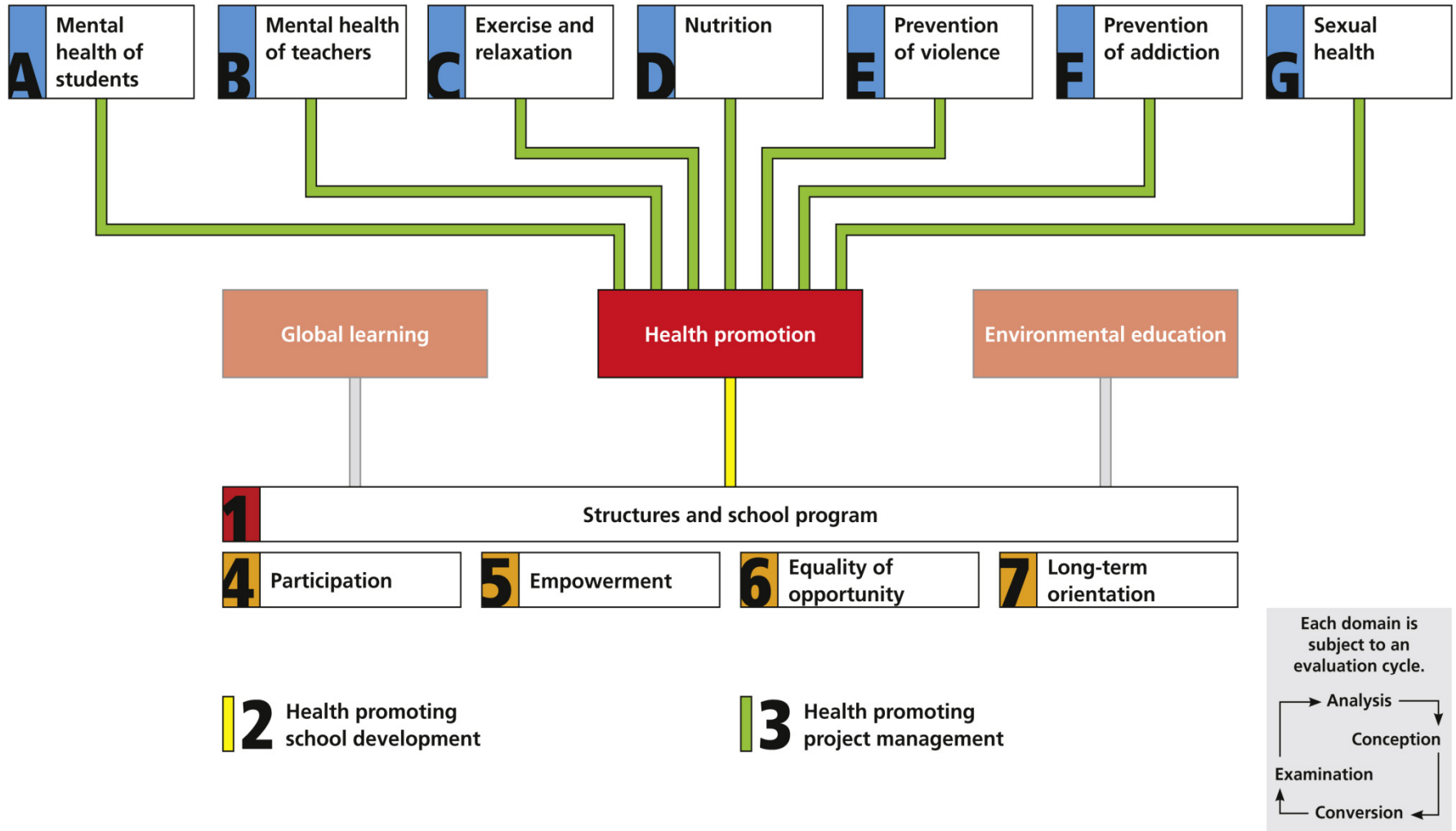
realised by



Links between health promotion, global learning and environmental education

Orienting on the same principles of health promotion after the Ottawa Charter:
Participation, empowerment, orientation on resources, long-term orientation and equality of opportunity concerning gender, social, ethnic and religious background.

Quality criteria for health promoting schools



Health promotion – a component of education for sustainable development

New approaches

- The health of human populations, equitable distribution of resources and the health of global ecosystems are inextricably linked.
- The need for fundamental changes in how we live is becoming impossible to ignore.
- Health promotion, equity and sustainable development are all relevant for schools, yet often they are being treated as different issues.
- Linking these parallel approaches is the aim of this international symposium.

Programme du Symposium

Samedi, 10 Juillet 2010

8:30-9:00 Accueil.

▶ **9:00-9:15**

Bienvenue et ouverture du Symposium
Edith Lanfranconi et Gaël Pannatier (RSES)

▶ **9:15-10:15**

Conférence plénière I *Shirley Tagalik*

▶ **10:15-10:45** Pause-santé

▶ **10:45-12:15**

Six ateliers simultanés

▶ **12:15-13:30** Repas

▶ **13:30-15:00**

Six ateliers simultanés

▶ **15:15-15:30** Pause-santé

▶ **15:30-16:45**

Conférence plénière II
Reiner Mathar ; Jaimie Cloud

▶ **16:45-17:00**

DISCOURS de clôture *Elisabeth Baume-Schneider, présidente de la Conférence intercantonale de l'instruction publique*

▶ **17:00-17:30** Affichage des posters

▶ **17:45-18:45** Healthy walk and talk

Dimanche, 11 Juillet 2010

8:30-9:00 Accueil

▶ **9:00-9:15**

Introduction
Douglas McCall (ISHN) et Goof Buijs (SHE)

▶ **9:15-10:15**

Conférence plénière III *Carol Tannahill*

▶ **10:15-10:45** Pause-santé

▶ **10:45 - 12:15**

Quatre Sessions de travail parallèles

▶ **12:15-12:30** Pause-santé

▶ **12:30-13:30**

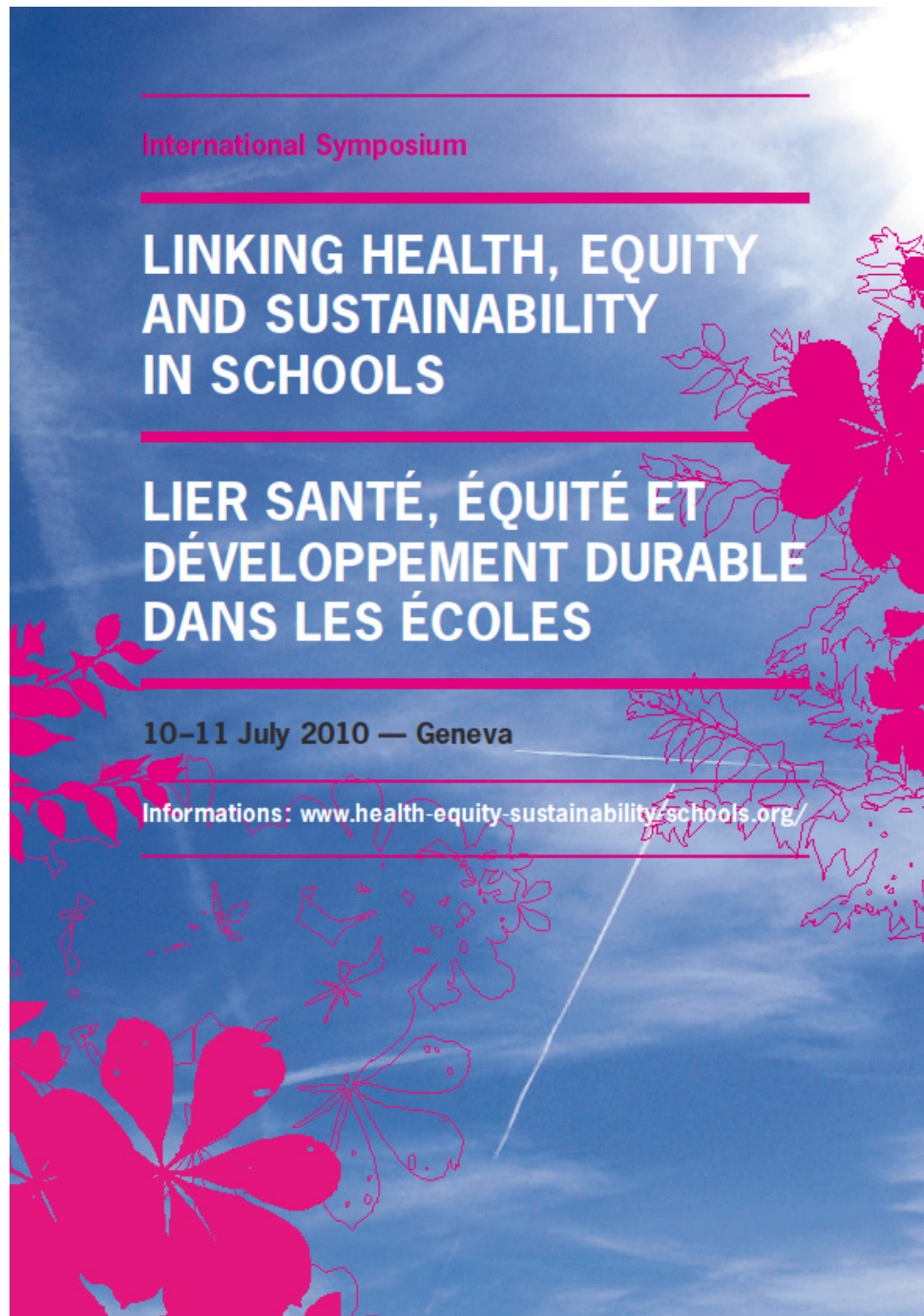
Session de clôture :
Panel des perspectives éducatives, politiques et internationales. Avec la participation de représentants des organisations internationales.

▶ **13:30-14:45** Repas

Animation de la journée par des intermèdes de l'artiste Bruno Bieri 🎵

Ouverture de la Conférence mondiale en fin d'après-midi

Bonnes
découvertes
et
discussions !



Good
inspirations
and
discussions !

Keynote I - Shirley Tagalik

Linking Health, Equity and Sustainability: A New and Traditional Way of Thinking and Acting

*Project Lead, National Collaborating Centre on
Aboriginal Health, Chair, Aboriginal School
Health Community of Practice, Canada*

Keynote II - Reiner Mathar

Practical steps and examples of integrated practice at school in Health, Equity and Sustainable Development

Service Center School and Health, Representative of Education for Sustainable Development, Germany

Keynote II - Jaimie Cloud

Health, Equity and Sustainability: What is the connection for Schools?

*President/Executive Director of the Cloud Institute
for Sustainability Education, USA*

Keynote III – Carol Tanahill

**Integrated approaches to health, sustainability
and equity: addressing the challenges**

*Director, Glasgow Centre for Population
Health, Scotland*